

Guide for immigrants



Author: Boryana Yankova

Stylized: Ria Juhanpelto

June 2015.

Edited: Marika Haake,

Pirjo Pulkkinen &

Katri-Helena Tolonen

Autumn 2015

CONTENTS

1 WELCOME TO PIEKSÄMÄKI!	6
Help and advice	7
2 MOVING TO PIEKSÄMÄKI FROM ABROAD	8
What to do first	8
Registration in Local Register Office	9
Residence permit and right to residency in Finland	10
Social security in Finland – services of Kela	11
Services of the Employment and Economic Development Office	12
Bank services	13
Social services	14
Taxation	15
Address Notification	15
Customs	15
Courthouse and Pieksämäki police station	16
3 HOUSING	17
Renting a home	17
Other costs of rented housing	17
Electricity	17
Water	18
Waste management and recycling	18
Insurances	19

4 TRANSPORT20

 Local public transport20

 Rail transport (VR).....21

 Taxi22

5 HEALTHCARE SERVICES.....23

 Emergency number 11223

 First aid and accidents and emergencies in Pieksämäki.....23

 Pieksämäki health centre.....24

 Health centres:24

 Dental care25

 Dental Clinics:25

 Maternity and Child Health Clinic.....26

 Family counselling centre.....27

 Mental health services27

 Crises.....27

6 DAYCARE AND PRE-PRIMARY EDUCATION28

 City of Pieksämäki /daycare28

7 EDUCATION.....29

 Basic education30

 Primary Schools.....30

 Afternoon activities31

 Upper Level Schools.....31

Upper secondary education	31
General upper secondary school.....	31
Vocational education	32
Higher education	33
Adult education centre	33
8 CULTURE AND LIBRARY.....	34
Libraries	35
Nukkekotit.....	36
Theater.....	37
Railway Museum / Savon Radan museo.....	37
9 INTEGRATION SERVICES	38
TE-office	38
Pieksämäki adult education centre / Seutuopisto	38
Rehvitupa.....	39
Evangelical Lutheran Church in Pieksämäki/ Pieksämäen seurakunta	39
10 LEISURE TIME	40
Sports.....	40
Cinema	41
Adult education centre (Seutuopisto).....	41
Events in Pieksämäki	41
11 ACCOMMODATION, SHOPPING AND RESTAURANTS	42
12 POSTAL SERVICES	43
13 RELIGION	44
Evangelical Lutheran Church in Pieksämäki	44

Orthodox Church of Finland in Pieksämäki.....44

Pieksämäki Free Church44

Pieksämäki Pentecostal Church44

OTHER SERVICES45

Maahanmuuttovirasto.....45

Multicultural women’s house (Helsinki)45

Refugee Advice Centre46

Ombudsman for minorities / Vähemmistövaltuutettu.....47

The Finnish League for Human Rights / Ihmisoikeusliitto.....47

LINKS48

ATTACHMENTS49

1 WELCOME TO PIEKSÄMÄKI!



The town of Pieksämäki is located in the province of Eastern Finland and is part of the South Savo region. It has a population of approx. 20,000. Other bigger towns in the region are Mikkeli and Kuopio and Jyväskylä.

Pieksämäki railway station is an important junction for the Finnish railway network and an interesting place to visit is the Railway Museum. Pieksämäki is situated in the area of Finland rich in nature and you can also find many recreational places in the town area. Pieksämäki lake can be seen from the town centre. The surrounding countryside provides excellent places for outdoor activities like canoeing and hiking and a wide range of rental cottages can be found here.

Further information on the city of Pieksämäki and its services can be found in Finnish at www.pieksamaki.fi.

Tourist information of Pieksämäki area can be found in Finnish, English, German, Russian and Chinese at www.visitpieksamaki.fi.

Welcome to Pieksämäki!

Help and advice

For help and advice can ask from the following places:

- Tourist Information
- Customer Service Desk of the city of Pieksämäki
- The Employment and Economic Development Office (TE-office), Pieksämäki
- Pieksämäki Adult Education Centre
- Rehvitupa



Market place, Pieksämäki

2 MOVING TO PIEKSÄMÄKI FROM ABROAD

What to do first

REGISTER:

1. Local Register Office: Register in the Finnish Population Information System and get personal identity number. www.maistraatti.fi
2. Police department: Make sure you have a right to residence in Finland. Register www.poliisi.fi
3. Kela (Finnish Social Insurance Institution): Apply for a right to Finnish social security. www.kela.fi
4. The Employment and Economic Development Office (TE-Office): www.te-palvelut.fi

In addition to registration, take care of the following:

1. Bank: After you have received a personal identity number, open a bank account.
2. Social office: Apply for financial aid if applicable.
3. The customer service desk of Pieksämäki: The caller is directed to city services such as applications for daycare or comprehensive school places.
4. Tax office: When you know your salary or other income, apply for a tax card www.vero.fi

Registration in Local Register Office



LOCAL REGISTER OFFICE OF EAST FINLAND

Mikkeli Unit

Maaherrankatu 9–11.

Open Tue 9.00–11.00 and Thu 13.00–15.00

You need your personal identity number in many places in Finland:

- at the local register office
- at the police department
- at the bank
- at the health centre
- at the hospital
- at the pharmacy
- at government agencies
- at the Social Insurance Institution (Kela)

Residence permit and right to residency in Finland

EASTERN FINLAND POLICE DEPARTMENT

Hallituskatu 4, Mikkeli

Immigration Office serves customers only by appointment. Customers can make an appointment either in the internet or by phone during service hours on weekdays 9 - 11 am, tel. 0295 455 050. (Monday to Friday 9.00-11.00)

By phone Immigration Office will answer questions on general permit matters only. Enquiries concerning individual permit applications cannot be answered by phone.

- ulkomaalaisasiat.mikkeli@poliisi.fi

Social security in Finland – services of Kela



KELA PIEKSÄMÄKI OFFICE

Lampolahdenkatu 6

Open 9.00–16.00

www.kela.fi

KELA CUSTOMERS

- Families
- Students
- Unemployment
- Pensions
- Conscripts
- Housing benefits
- Sickness
- Disability
- Rehabilitation
- Survivor benefits
- Moving to or from Finland
- Kela card

More information can be found in the website of Kela in Finnish, Swedish and English. Information is also Sami, Russian, Estonian, German and French www.kela.fi/muutkielet.

Services of the Employment and Economic Development Office (TE-office)



SOUTH SAVO TE-OFFICE, PIEKSÄMÄKI

Savontie 20, 2nd floor

Open Mon-Fri:

9.00-12.00 without appointment

13.00-16.00 only with appointment

Phone services 9.00–16.15

0295 044 000 (switchboard)

www.te-palvelut.fi

Bank services

Danske Bank

Danske Bank, Pieksämäki
Kauppakatu 5-7
tel. 0200 2580
Open Mon - Fri 10.00 - 12.00 and 13.00 - 16.30



Suur-Savon osuuspankki, Pieksämäki
Kauppakatu 2
Open Mon - Fri 10:00–16.30
tel. 010 255 2601
www.op.fi

S-Pankki

S-pankki Customer Service Point, S-market, Pieksämäki
Kauppakatu 3
tel. 015 206 2355
www.s-pankki.fi

Social services

CITY OF PIEKSÄMÄKI / SOCIAL OFFICE

Lampolahdenkatu 2–4

Mon-Fri 9.00–10.00

tel. 044 799 5539 or 015 788 2111 (switchboard)

CUSTOMER SERVICE DESK OF PIEKSÄMÄKI

LATOMO

Kauppakatu 1

Mon-Fri 8.00–15.00

tel. 015 788 2111(switchboard)

www.pieksamaki.fi



(photo Jone Matilainen)

Taxation



www.vero.fi – information in Finnish, Swedish and English

- Tax card
- Tax return
- Tax notice

Address Notification

Moving within the city or within Finland

You can submit a Change of Address Notification:
by phone 0295 535 535
Mon-Fri 8.00-16.00

Online www.muuttoilmoitus.fi or www.posti.fi/muuttoilmoitus,
using this service requires an online banking or post office ID

Emigration notification

If you move out of Finland, you must submit an emigration notification (maastamuuttoilmoitus) to the local register office.

Customs



Importing personal and household items or a car.

www.tulli.fi

Courthouse and Pieksämäki Police Station

POLIISI



EASTERN FINLAND POLICE DEPARTMENT

Police station Pieksämäki

Savontie 20
tel. 0295 450 311(switchboard)

Information and advice

Open Wednesdays 8.00-16.15, all other times Varkaus Police Station
tel. 0295 415 268

In case of emergency, call the general emergency number 112.

Licence Service Point (eg. Passports, ID card applications, driver's licence)

Open Monday to Friday 9.00-16.15, tel. 0295 415 295 (13.00-15.00)

3 HOUSING

Renting a home

PIEKSÄMÄEN HAKA OY

Keskuskatu 30
tel. 015 348 060
Open Mon-Fri 8.00–16.00
www.pieksamaenhaka.fi

Internet:

www.jokakoti.fi , www.vuokraovi.com , www.etuovi.com ,
www.oikotie.fi

Remember to submit a Change of Address Notification (muuttoilmoitus) every time you move from one place to another at the post office.

www.muuttoilmoitus.fi or www.posti.fi/muuttoilmoitus

Other costs of rented housing

Electricity



tel. 0800 301 40
Mon-Fri klo 8.00–20.00, Sat klo 10.00-16.00
asiakaspalvelu@savonvoima.fi
www.savonvoima.fi

When you move into a new home, make a new electricity supply agreement. Remember to terminate the electricity supply agreement when you move out.

Water



Vilhulantie 5, 76850 NAARAJÄRVI
Open 8.00–15.30
www.pieksamaenvesi.fi

Waste management and recycling



RECYCLING CENTRE JÄTEKUKKO

Puhdistamontie 1
Open:
Mon & Wed 10.00–18.00 and Fri 10.00–17.00

tel. 017 368 0152
Mon-Fri 8.00–16.00
www.jateukko.fi

Insurances



PSVM Oy Kauppakatu 1, 76100 Pieksämäki
tel. 010 19 19 19, Mon-Fri 8.00–20.00
www.if.fi



Keskuskatu 17–19, 76100 Pieksämäki
Open:
Mon-Thu 9.00–16.30
Fri 9.00–16.00
tel. 017 684 4000
www.lahitapiola.fi



Kauppakatu 2, 76100 Pieksämäki
Open 10.00 - 16.30
tel. 010 255 2601 (Mon-Fri 8.00–18.00)
www.op.fi

4 TRANSPORT

Local public transport

KANTAMATKAT

Luhtikatu 2
tel. 050 379 6659
kantamatkat@hotmail.com
www.kantamatkat.fi



Asemakatu 2
Open 8.00-17.00
www.matkahuolto.fi

SERVICES

- Bus tickets sale
- Travel cards
- Travel card recharging
- Receiving parcels
- Sending parcels



Rail transport (VR)



Asemakatu 2

Ticket vending machine and waiting room open

Mon-Sat 5.00-22.45 and Sun 8.15-22.45

www.vr.fi

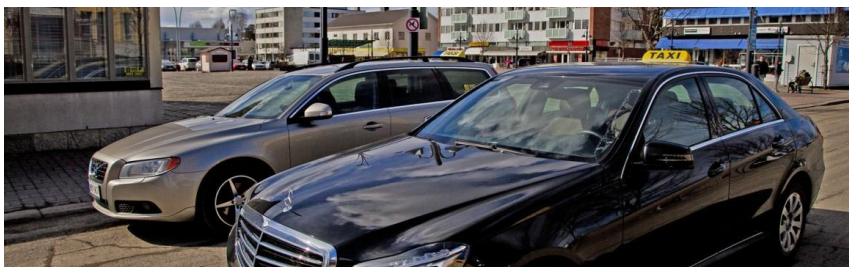
For information on traffic safety in Finnish, English and Russian, visit www.liikenneturva.fi.

www.matka.fi - provides information on train and bus connections, flight and walking trails in Finland.

Taxi

tel. 0600 30057

www.taksipieksamaki.fi



(Photo Pieksämäki Taxis)

5. HEALTHCARE SERVICES



Emergency number 112

Call the general emergency number **112** to contact ambulance, fire brigade or police.

In Finland we use only one emergency number, 112.

You can call the emergency number 112 free of charge from any phone with no need for an area code.

You can also call 112 from a foreign mobile phone connection. You still won't need an area code, just dial 112

First aid and accidents and emergencies in Pieksämäki

Urgent medical care in the evenings until 21:30 and at weekends

PIEKSÄMÄKI HOSPITAL

Open 8.00–21.30
Sairaalantie 14, 76100 Pieksämäki
tel. 015 788 4255 (Mon-Thu 8-15 and Fri 8-14)
tel. 044 799 5546 (8.00–21.30)

MIKKELI CENTRAL HOSPITAL

Porrassalmenkatu 35–37, 50100 Mikkeli
tel. 015 225 588
- At night 21–07
- at weekends and public holidays 15–07

Pieksämäki health centre

Non-urgent cases are primarily treated at the Main Health Centre

Health centres:

MAIN HEALTH CENTRE

Tapparakatu 1-3, 76100 Pieksämäki
Nurses, tel. 015 788 4255
Mon-Thu 8.00–9.00 and Fri 13.00-14.00

HEALTH CLINIC OF JÄPPILÄ

Mon-Thu 8.00–15.00
Jäppilän Kirkkotie 16, 77570 Jäppilä
tel. 015 788 4241

HEALTH CLINIC OF VIRTASALMI

Tue-Thu 8–15 and Fri 8–13
Terveyspolku 4, 77330 Virtasalmi
tel. 015 788 4261

NAARAJÄRVI CLINIC, RECEPTION

Seunalantie 10 B

Reception is intended for over 65- year-olds living in Naarajärvi area.

Open: Mon-Thu 8.00-15.00, Fri 8.00-13.00

Appointments tel. 015 788 4256

Calling times: 8.30-9.00 and 13.00-13.30.

Dental care

Appointments Mon-Fri 8.00-15.30, tel. 015 788 4350.

In urgent cases, call between 8.00 and 10.00.

Dental Clinics:

- Main Dental Clinic, Tapparakatu 1-3, 76100 Pieksämäki
- Keskuskatu Dental Clinic, Keskuskatu 34, 76100 Pieksämäki
- Jäppilä Dental Clinic, Jäppilän Kirkkotie 16, 77570 Jäppilä, the clinic is open Mon-Thu.

On call dental care at weekends and public holidays 10.00-14.00

Pankalampi Main Health Care Clinic, Kiiskinmäenkatu 5-7, Mikkeli

Tel. 015 194 4425

Ensineuvo

Advice and direction to the right health care service

Tel. 015 211 411 (Monday to Friday 15.00-21.00 and public holidays 7-00-9.00 and 10.00-15.00)

Maternity and Child Health Clinic

Maternity / family planning clinic, as well as maternity and gynecological clinic

Main Health Centre, Tapparakatu 1-3, 76100 Pieksämäki
tel. 015 788 4280
calling time 11.00–12.00

Child Health Clinic / Lastenneuvola

Main Health Centre, Tapparakatu 1-3
office Mon-Thu 8.00-15.00, Fri 8.00-14.00
tel. 015 788 4280
Calling times:
Tue-Thu 8.00–9.00 and 13.00–14.00, Fri 8.00–9.00
Nurses 11.00-12.00

Family counselling centre

Support for children and families

Kanttila, Vilhulantie 5, 76850 Naarajärvi
Advice and appointments by phone Mon-Fri 12.00-13.00
tel. 044 7995695 or 015 788 2111 (switchboard)

Mental health services

Psychiatric Clinic provides services for the adult population in life crises and mental health problems.

Psychiatric Clinic

Tapparakatu 1-3
tel. 015 788 4420
Open Mon-Thu 8.00-16.00 and Fri 8.00-14.00
No on-call doctor available

Children and youth psychiatric services (under 18 years) take place in Family Health Clinic in Naarajärvi: Kanttila, Vilhulantie 5.

Crises

Pieksämäki Crisis Group is formed of professionals, who help families, friends, colleagues in life's crises eg. a traffic accidents, a sudden death of a close relative or dealing with suicides.

To reach the Crisis Group call the First Aid Clinic
tel. 015 788 4380

6 DAYCARE AND PRE-PRIMARY EDUCATION

Pieksämäki town/daycare

Daycare for children (aged 0-6) and preschool (6-year-olds)

Children's daycare is constantly open for applications. Applications can be submitted online through the electronic form on the town website.

Application forms are also available in daycare centres and the Daycare Office.

DAYCARE OFFICE

Kanttila, Vilhulantie 5, 76850 Naarajärvi

Mon-Wed 9.00-12.00

tel. 015 788 2111 (switchboard)



(photo Jone Matilainen)

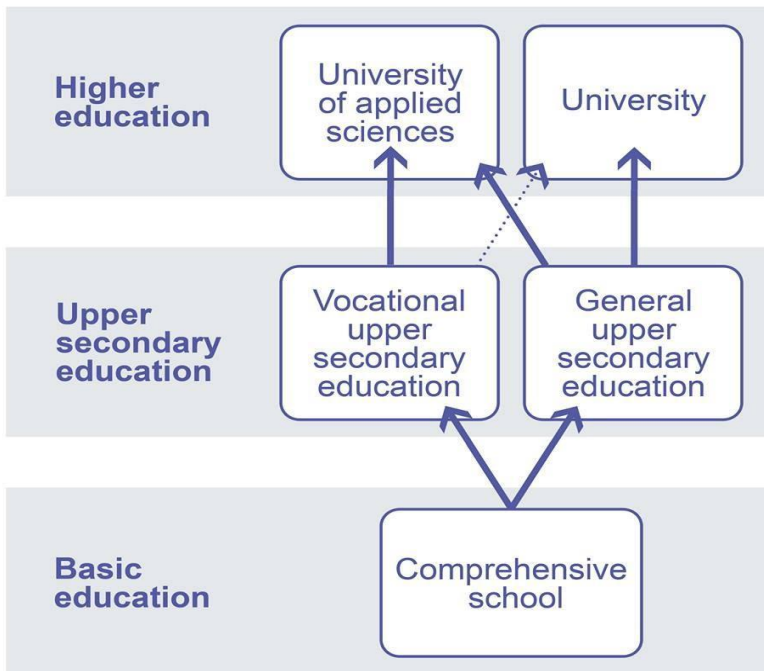
7 EDUCATION



OPETUSHALLITUS

Finnish National Board of Education www.oph.fi

Finnish education system



Basic education

PIEKSÄMÄKI TOWN SCHOOL OFFICE

Kauppakatu 1
tel. 015 788 2111 (switchboard)

Primary Schools

- Harjun koulu: Kuopiontie 22, 76150 Pieksämäki
preparatory teaching (2015–2016)
Headmaster Timo Tarkiainen, tel. 044 588 2417
- Jäppilän koulu: Kirkkotie 9 C, 77570 Jäppilä
School director Johanna Keinänen tel. 040 510 2488
- Kontiopuiston koulu: Kuusitie 46, 76120 Pieksämäki
Headmaster Asko Hankilanoja, tel. 044 588 3712
- Maaselän koulu: Seunalantie 8, 76850 Naarajärvi
Headmaster Pasi Naumanen, tel. 044 588 3230
- Peiposjärven koulu:
Peiposjärventie 1603, 77430 Siikamäki
School director Susanna Tourunen, 0400 855 786
- Vehmaskylän koulu:
Vehmaskyläntie 420, 76100 Pieksämäki
School director Elina Aspegrén, tel.0400 855 785
- Virtasalmen koulu: Koulutie 12, 77330 Virtasalmi
School director Mikko Kontturi, tel. 040 567 8544

Afternoon activities

In accordance with the Basic Education Act, 1st and 2nd grade pupils and pupils with special needs may apply for a place in afternoon activities (iltapäivätoiminta).

Afternoon activities planner

Pirjo Särkkä

tel. 015 788 2111 (switchboard)

Upper Level Schools

- Hiekanpään koulu:
Keskuskatu 45 and Huvilakatu 31, 76100 Pieksämäki
Headmaster Henri Itkonen, tel. 044 588 2498

Upper secondary education

General upper secondary school

- Pieksämäen lukio:
Keskuskatu 32, 76100 Pieksämäki
Headmaster Vesa Vahtermo, tel. 044 588 2410

Vocational education



BOVALLIUS-AMMATTIOPISTO

Hallipussi 1, 76150 PIEKSÄMÄKI

tel. 02 274 1100

www.bovallius.fi



ETELÄ-SAVON AMMATTIOPISTO

Kuusitie 41, 76100 PIEKSÄMÄKI

tel. 015 221 5111

www.esedu.fi



SEURAKUNTAOPISTO

Huvilakatu 31, 76130 PIEKSÄMÄKI

tel. 0207 54 2500 (switchboard)

www.seurakuntaopisto.fi

Higher education



DIAKONIA UNIVERSITY OF APPLIED SCIENCES / AMMATTIKORKEAKOULU

Huvilakatu 31, 76130 PIEKSÄMÄKI

tel. 020 690 437

tel. 040 821 2000

www.diak.fi

Adult education centre

PIEKSÄMÄEN SEUTUOPISTO

Poleeni, Savontie 13

Office open Mon-Thu 9.00–15.00

<https://seutuopisto.pieksamaki.fi/web/>

8 CULTURE AND LIBRARY



CULTURAL CENTRE POLEENI

Savontie 13, 76100 Pieksämäki

Mon-Thu 9.00–19.00, Fri 9.00–17.00, Sat 10.00–14.00

www.poleeni.fi

Libraries

Poleeni library

Savontie 13, 76100 Pieksämäki
tel. 044 787 4023, 044 787 4024

Mon-Thu 11 - 19, Fri 11 - 17, Sat 10 – 14
<http://kirjasto.pieksamaki.fi>

Jäppilä library

Jäppilän Kirkkotie 9 A, 77570 Jäppilä
tel. 044 787 4022

Mon-Tue 12.00–18.00, Wed-Thu 9.00–15.00, Fri 12–16.00

Virtasalmi library

Virastotie 3, 77330 Virtasalmi
tel. 044 788 3557

Mon & Wed 12.00-19.00, Tue ja Thu 9.00-16.00

Mobile library Rietriikki

Vilhulantie 5, 76850 Naarajärvi
tel. 044 588 3824

sakari.mattila@pieksamaki.fi

Nukkekot



The fairy tale and adventure house Nukkekot

Hiekanpäänniemi, 76100 Pieksämäki

tel. 044 799 55 47

- <https://fi-fi.facebook.com/SadunJaSeikkailunTalo/info/?tab=overview>
- Lastenkulttuurikeskus Verso puh. 044 799 5547
<http://www.versoverkko.fi/default.asp?siteid=Suomi&id=nukkekot>

Theatre



Poleeni theater, cultural centre Poleeni
Savontie 13, 76100 Pieksämäki
www.poleeni.fi,
<https://www.facebook.com/poleeninteatteri?ref=hl>

Railway Museum / Savon Radan museo

Ratakatu 8

<http://www.savonradanmuseo.fi>



9 INTEGRATION SERVICES

TE-office

Lampolahdenkatu 10
Mon-Fri 9.00–16.15
tel. 0295 044 000

Integration training and employment services

Pieksämäki adult education centre / Seutuopisto

Poleeni / Savontie 13
0400 855 800 (office)
044 588 3429 (language teacher)
www.pieksamaki.fi/seutuopisto
<https://www.facebook.com/seutuopisto>

Finnish language teaching, initial assessment, HelpDesk for immigrants, Language proficiency tests (YKI-kielitutkinnot), meeting place Rehvitupa.

You can find links to studying Finnish under the following link:
<http://peda.net/veraja/pieksamaki/so/kielet/suomi>

Rehvitupa

International Meeting Place.

Lukio, Keskuskatu 32

<https://seutuopisto.pieksamaki.fi/web/rehvitupa/>

<https://www.facebook.com/Rehvitupa-Multicultural-Meeting-place-722550241093764/?ref=ts&fref=ts>

Evangelical Lutheran Church in Pieksämäki / Pieksämäen seurakunta

Secretary of international work

Eija Junnilainen

tel. 050 911 9662

eija.junnilainen@evl.fi

Multicultural café once a month at the New Church, Tapulin Tupa,
Keskuskatu 31, 76100 Pieksämäki.

10 LEISURE TIME

Sports



(Hiekanpää Sportpark, foto SportPieksämäki)

In Pieksämäki there are:

- Frisbee golf courses
- Golf course
- Horse racing
- Indoor ice-skating rink
- Martial arts gyms
- Gyms
- Swimming pool
- Beaches
- Outdoor courts

For more information: <http://sport.pieksamaki.fi>

Cinema



Laaksotie 47

Program: 015 422 040

Ticket booking: 040 525 9324

<http://www.kino-mania.info>

Adult education centre (Seutuopisto)

Pieksämäki Adult Education Centre Seutuopisto organizes hobby and recreational activities as well as integration services.

Seutuopisto offers courses eg. in fine arts and crafts, languages, information technology and health and physical activity.

<https://seutuopisto.pieksamaki.fi/web/>

<https://www.facebook.com/seutuopisto/?fref=ts>

Events in Pieksämäki

Check the website:

<http://www.pieksamaki.fi/tapahtumakalenteri>

11 ACCOMMODATION, SHOPPING AND RESTAURANTS

Opportunities can be found:

<http://www.visitpieksamaki.fi/majoitus/mokki-ja-maatilamajoitus/>

Hotel Savonsolmu:

<http://www.savonsolmu.fi/>

Shops:

<http://www.visitpieksamaki.fi/ostokset/>

Restaurants:

<http://www.visitpieksamaki.fi/ravintolat/>

12 OTHER SERVICES

Postal services



POST PIEKSÄMÄKI

Kukkaroniementie 3

Open Mon-Fri 9.00-18.00

www.posti.fi

Parcel Point K-citymarket Pieksämäki

Kukkaroniementie 3

Open:

Mon-Fri 8.00-21.00

Sat 8.00-18.00

Sun 12.00-18.00

13 RELIGION



(Pieksämäki new church, photo Pieksämäki parish)



**Pieksämäen
seurakunta**

Keskuskatu 27

tel. 015 321 810

<http://www.pieksamaenseurakunta.fi/>

Orthodox Church of Finland in Pieksämäki

Vanha Mikkeliintie 18

Pieksämäki Free Church

Koulukatu 12

Pieksämäki Pentecostal Church

Savontie 61

14 OTHER SERVICES



Finnish immigration service (Helsinki)

Maahanmuuttovirasto

Panimokatu 2 A, 00580 Helsinki

CUSTOMER SERVICE:

Lautatarhankatu 10, 00580 Helsinki

Customer service tel. 0295 419 600 Mon-Fri 9.00-15.00

migri@migri.fi

www.migri.fi

Multicultural women's house (Helsinki)

Moninaisten talo (Helsinki)

Hermannin Rantatie 12 A, 00580 Helsinki

help line: 09 692 2304 (9.00–16.00)

info@monikanaiset.fi

www.monikanaiset.fi

Refugee Advice Centre

HELSINKI OFFICE

Kaisaniemenkatu 4 A, 6th floor

00100 Helsinki

tel. 075 7575 100

open Mon-Fri 9.00-16.00

www.pakolaisneuvonta.fi

LAPPEENRANTA OFFICE

Läykäntie 62

54190 Konnunsuo

Tel. 075 7575 105

open Mon-Fri 9.00–12.00 and 13.00–16.00

OULU OFFICE

Kirkkokatu 19 A 16

90100 Oulu

Tel. 075 7575 105

open Mon-Fri 9.00-12.00 and 13.00-16.00

pan.oulu@pakolaisneuvonta.fi

Ombudsman for minorities / Vähemmistövaltuutettu

The Non-Discrimination Office of the Ombudsman
Vuorikatu 24, Helsinki
Customer service phone number: 0295 666 817
Phone service Mon-Fri 10.00-12.00
www.ofm.fi

The Finnish League for Human Rights / Ihmisoikeusliitto

Simonkatu 8 A, 6th floor, Helsinki
tel. 09 4155 2500
info@ihmisoikeusliitto.fi
www.ihmisoikeusliitto.fi

LINKS

Infopankki.fi – The website contains important information on Finnish society and public services, working life and training. The information is available in 15 different languages: Finnish, Swedish, English, Estonian, French, Russian, Somali, Serbo-Croat, Turkish, Spanish, Albanian, Arabic, Persian, Chinese and Kurdish.

Suomi.fi - The website contains information on Finnish society and public services, and the forms of various government agencies in Finnish, Swedish and English. The site also contains information on immigration

www.suomi.fi → Services by topic → migration

Intofinland.fi – The website gives information to foreign workers in Finland in different languages: Finnish, Swedish, English, Russian.

Welcome to Finland – brochure was produced by the Ministry of the Interior with support from the European Social Fund in 2011. 12 various languages.

http://www.tem.fi/ajankohtaista/julkaisut/esitteet/perustietoa_suomesta



ATTACHMENTS

Etelä-Savo province





